

# Trucking

- Route is ~240 miles one-way; 90% on public highways
- We are in early stages of understanding the trucking requirements for the project and options available for the contractors
- Early discussions with the Department of Transportation to better understand seasonal restrictions
- Generally, we will have a steady number of trucks for the majority of the year, with a slight dip in numbers of trucks for the seasonal restrictions (6-8 weeks of the year)
- The base case production rate is 3,900 tons/day for the project, which calculates to roughly 2-4 trucks each way/hour.

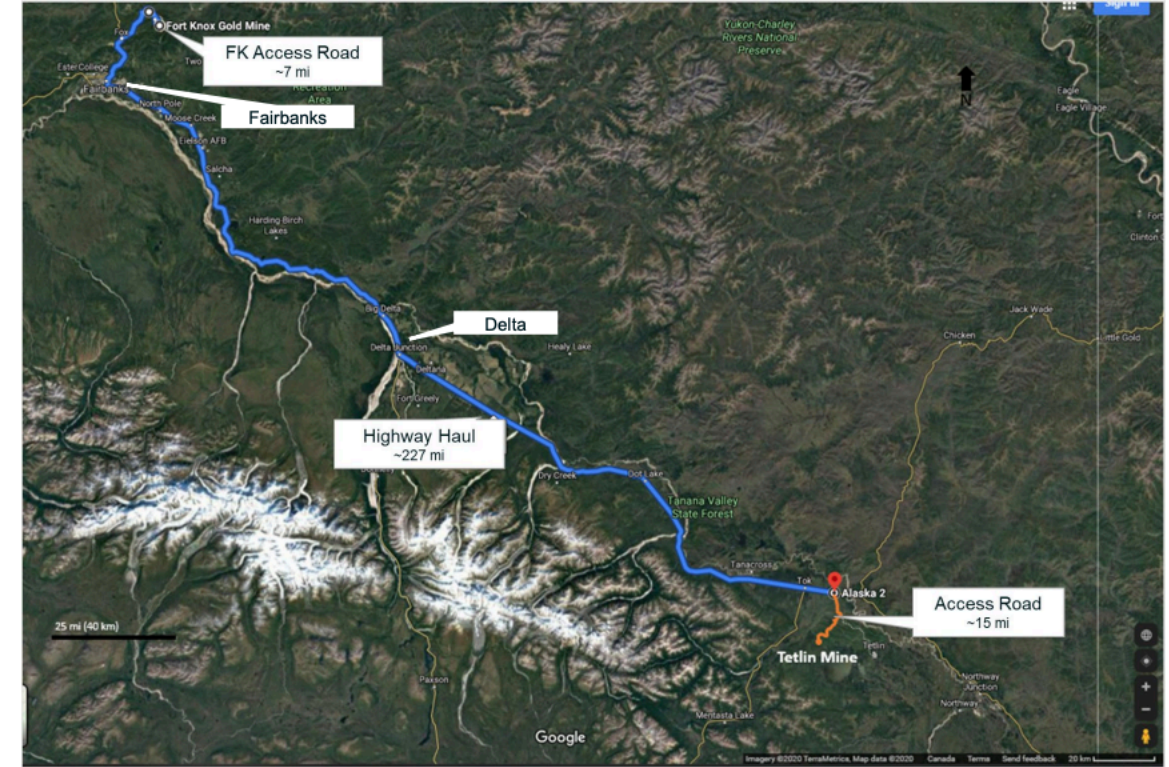


Image of On-Highway Truck Proposed